

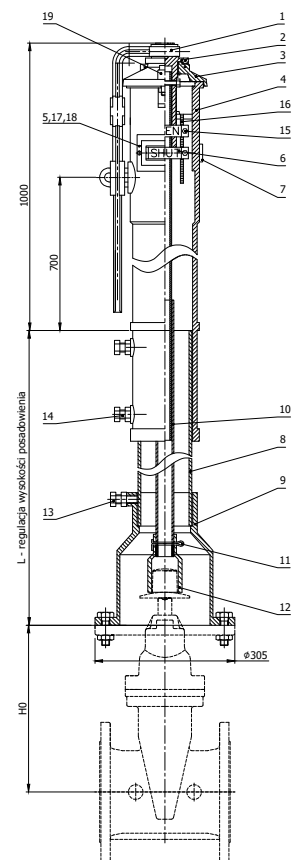
TELESCOPIC VERTICAL INDICATOR POST

AF03-01 4" - 12"



No	Part Name	Material - ASTM Specification
1	Handle	Ductile Iron EN-GJS-500-7
2	Driving Rod	Stainless Steel AISI 304
3	Indicator Cover	Cast Iron ASTM A126
4	Housing	Cast Iron ASTM A126
5	Keyhole Plate	A283 Gr. C ASTM A36
6	Indicator Plate	A413.0 ASTM S12A
7	Screwed Plut	Steel 1035
8	Extension Rod	A283 Gr. C ASTM A36
9	Flange	Cast Iron ASTM A126
10	Connecting Rod	Steel 1045
11	Cotter Pin	Steel 1035
12	Joint	Cast Iron ASTM A126
13	Bolt	Steel 1035
14	Bolt	Steel 1035
15	Bolt	Steel 1035
16	Driving Nut	Stainless Steel AISI 304
17	Keyhole Plate Gasket	Elastomer EPDM
18	Indicator Flap	Organic Glass
19	Bolt	Steel 1035

* A limit switch is available as an option.



Dimension:

Dimension	4"-12"
AF03-01	AM0499
Weight (kg)	81

DN (Inch)	100 (4")	150 (6")	200 (8")	250 (10")	300 (12")
Turn to close open	13	20	26	33	39
HO	252	355	444	534	617
L minimum	1170	1270	1360	1450	1535
L maksimum	1790	1895	1885	2075	2155